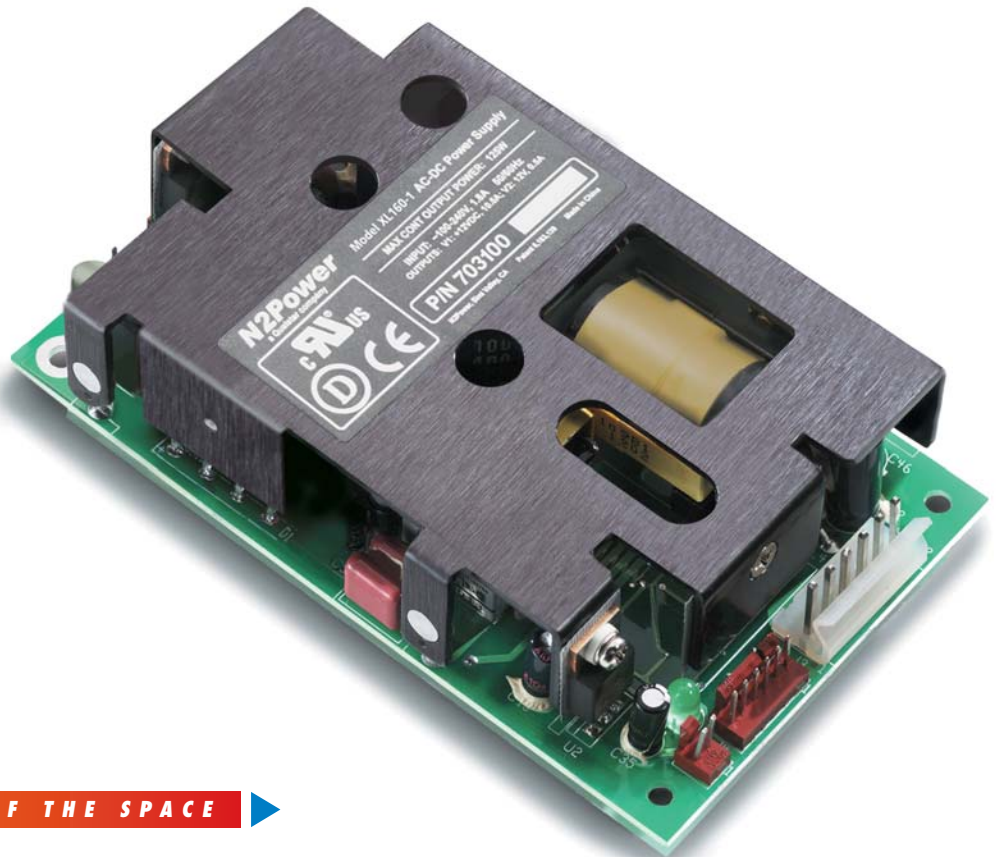


- **160 W AC-DC**
- **UP TO 90% EFFICIENCY**
- **HIGH POWER DENSITY:
8.5 W/in³**
- **UNIVERSAL AC INPUT**
- **ACTIVE PFC (90 – 264 VAC)**
- **BUILT IN OR'ING DIODES
FOR N+1**
- **3" X 5" SMALL FOOTPRINT**
- **<1U HIGH: 1.25"**
- **NO LOAD OPERATION**



POWER SUPPLY DESIGN LEADER

N2Power continues to lead the power density race with its new small, high efficiency open frame XL160 Series AC-DC power supplies.

TWICE THE POWER IN HALF THE SPACE

Our patented technology yields a very small footprint, reduces wasted power, and offers the highest power density in the market in the 160 watt range. The unique design means reduced energy costs, a greater return on your investment, greater reliability and longer product life.

UNMATCHED POWER DENSITY

With an overall height of 1.25" and a 3" x 5" footprint, the XL160 Series boasts a power density of 8.5 watts per cubic inch. It is ideally suited for OEMs using industry standard 1U chassis. N2Power's small form factor power supplies allow you to work with additional "real estate" for more functionality inside your product. Increased space, reduced thermal loads and lower costs will increase your competitive edge in the market.

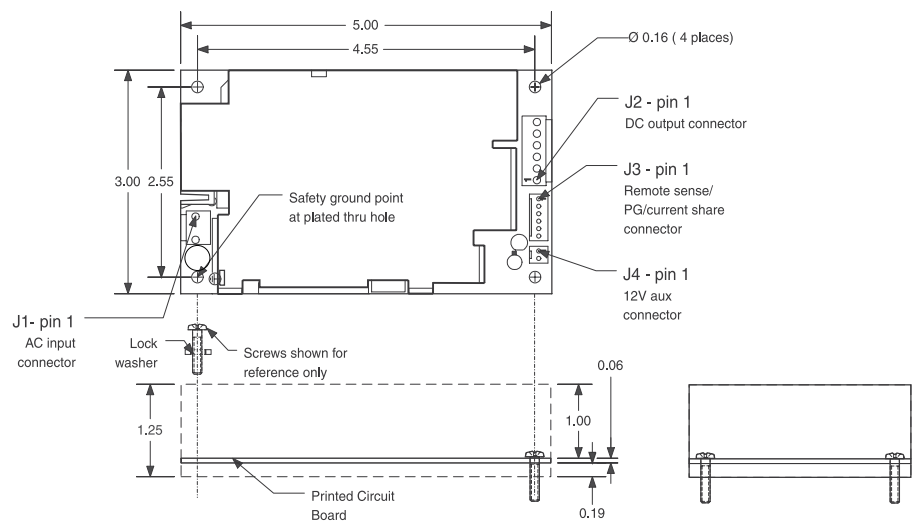
HIGH EFFICIENCY IN A SMALL PACKAGE

Reduced heat generation and greater reliability are key design requirements. The XL160 Series provides up to 90% efficiency in an AC-DC power supply. Our unique design reduces energy consumption and generates less wasted heat. It requires little forced air cooling, decreases AC loads, increases reliability and economy of operation.

Typical Mechanical Drawing:

Connectors and pinouts may vary based on model.

Refer to XL160 engineering specifications for complete information.



PFC READY, SAVE ENERGY

Many countries already require Power Factor Corrected (PFC) power supplies, which lessen loads at generating stations. All XL160 products incorporate active PFC technology

with universal input to provide superior efficiency in each supply. Comparisons of power loading show that our supplies can reduce consumption up to 50%.

XL160 Series

REPEATABLE QUALITY

We use advanced PCB technology to deliver the highest density and best performance in the industry. Our packaging design incorporates SMT technology to automate processes, ensure reliability, and reduce cost. Each power supply undergoes a complete functional test and a multi-hour burn-in to insure that every unit meets our stringent quality requirements. Detailed statistical production records are maintained and rigid quality and AQL control insures the highest quality product available. Each power supply design is also rigorously tested by UL, DEMKO, and European agencies, with scheduled factory audits to ensure ongoing compliance.

MODEL	OUTPUT	VOLTAGE	REGULATION (%)	MAXIMUM CURRENT (A)	RIPPLE & NOISE (P-P)
XL160-1	V1	+3.3	±2	15.0	50 mV
	V2	+5	±4	20.0	50 mV
	V3	+12	±5	6.0	120 mV
	V4	⌀1.2	±5	1.0	120 mV
XL160-2	V1	5	±3	32.0	50 mV
	V2	+12	±5	1.0	120 mV
XL160-3	V1*	12	±3	13.3	120 mV
	V2	12	±5	1.0	120 mV
XL160-4	V1*	15	±3	10.7	150 mV
	V2	12	±5	1.0	120 mV
XL160-5	V1*	24	±3	6.7	240 mV
	V2	12	±5	1.0	120 mV
XL160-6	V1*	48	±3	3.3	480 mV
	V2	12	±5	1.0	120 mV
XL160-7	V1	+2.5	±2	15.0	50 mV
	V2	+5	±4	20.0	50 mV
	V3	+12	±5	6.0	120 mV
	V4	⌀1.2	±5	1.0	120 mV
XL160-8	V1	+5	±4	20.0	50 mV
	V2	+12	±5	6.0	120 mV
	V3	⌀1.2	±5	1.0	120 mV

* Isolated Outputs

Nominal Input Voltage:	100 - 240 VAC
Maximum AC Input:	90 - 264 VAC
Input Frequency Range:	47 - 63 Hz
Input Current:	100 VAC
Input Protection:	3.15 A fuse
Safety Isolation:	3000 VAC input to output 1500 VAC input to ground
Inrush Current:	33 A @ 115 VAC
Power Factor Correction:	active PFC circuitry, meets or exceeds EN61000-3-2

Power:	160 W
Hold-up Time:	minimum 22 mS at all input voltages
Efficiency:	up to 90%
Minimum Load:	5 W on main outputs
Over/Under Shoot:	maximum 10% at turn-on
Overvoltage Protection:	on all main outputs
Overpower Protection:	protected / auto-recovery
Short Circuit Protection:	all outputs protected against short circuit
Thermal Shutdown:	protected against overtemperature conditions

Operating Temperature:	⌀25 to +50 ℃
Derating:	2.5 watts / degree C to 70 ℃
Storage Temperature:	⌀40 to +85 ℃
Forced Air Cooling:	10 CFM
Convection Cooling:	maximum 70 W , any combination of outputs
Leakage Current:	<1.5 mA
MTBF:	>200,000 hours calculated
Remote Sense:	on main output ^Δ
Current Sharing:	active current sharing with oring diode ^Δ
Power Good:	provided
PS_OK:	output
LED:	some models

COMPLIANCE:

USA / Canada:
UL60950 / C22.2, 60950 (Bi-National Standard) Safety of Information Technology Equipment

Represented and distributed by SD Electronics

4928 Carlton Ave.

Montreal, Quebec

H3W 1G8

Tel: 514-735-9673 Fax: 514-735-1274 email: info@sdelectroniks.com